

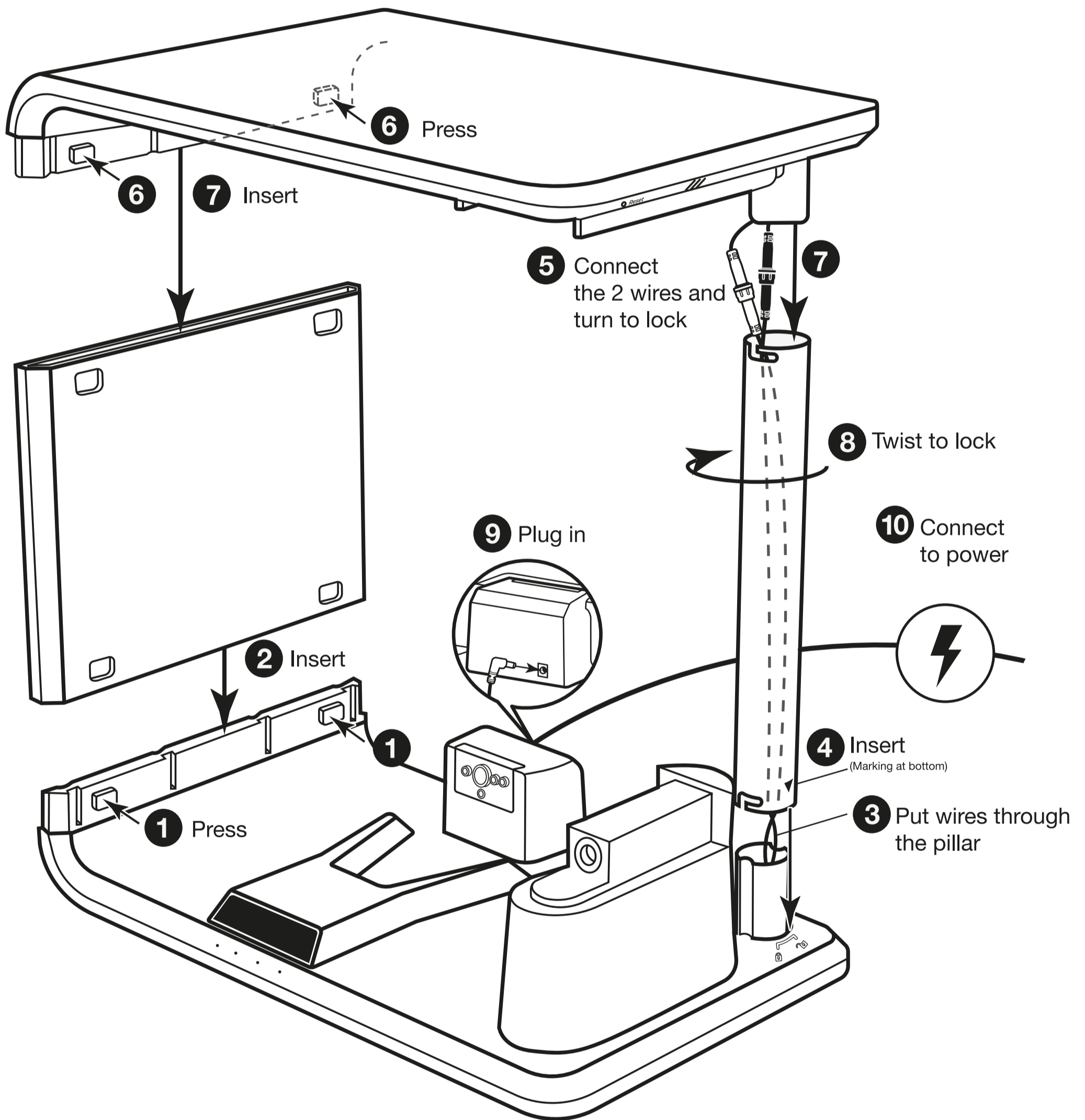
Contact Us for Enquiries

✉ info@aspara.hk

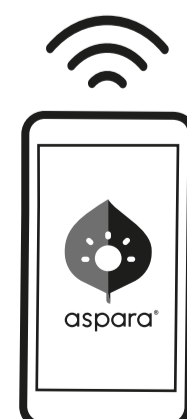
Quick Setup Guide

220720

1/ Assemble Product



2/ Download Mobile App

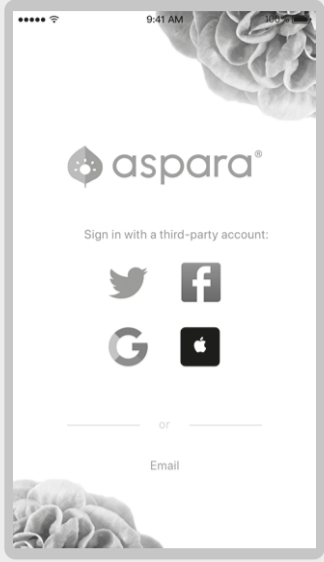


Scan to download

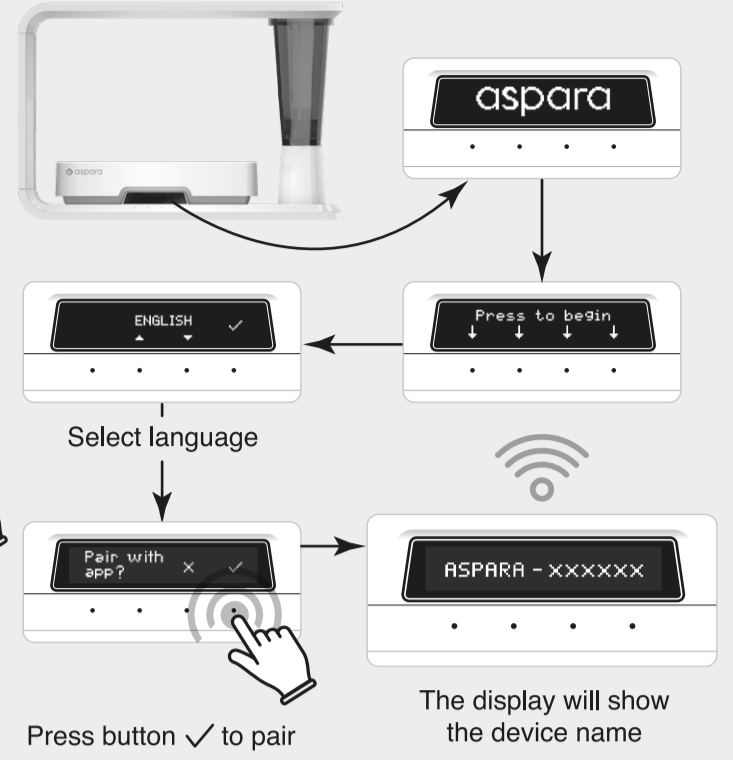
3/ Use Online Mode

Bring your aspara® Nature+ online to enhance your planting experience.

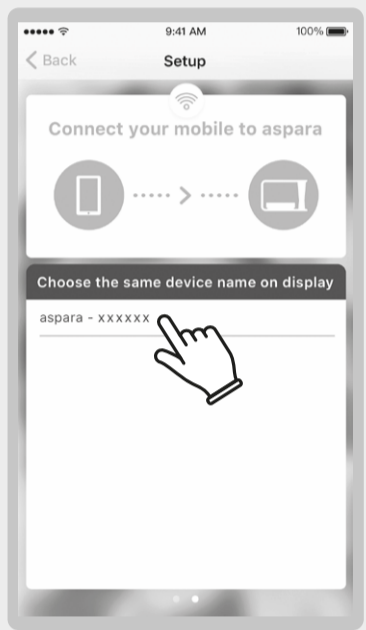
3a/ Launch the App and sign up



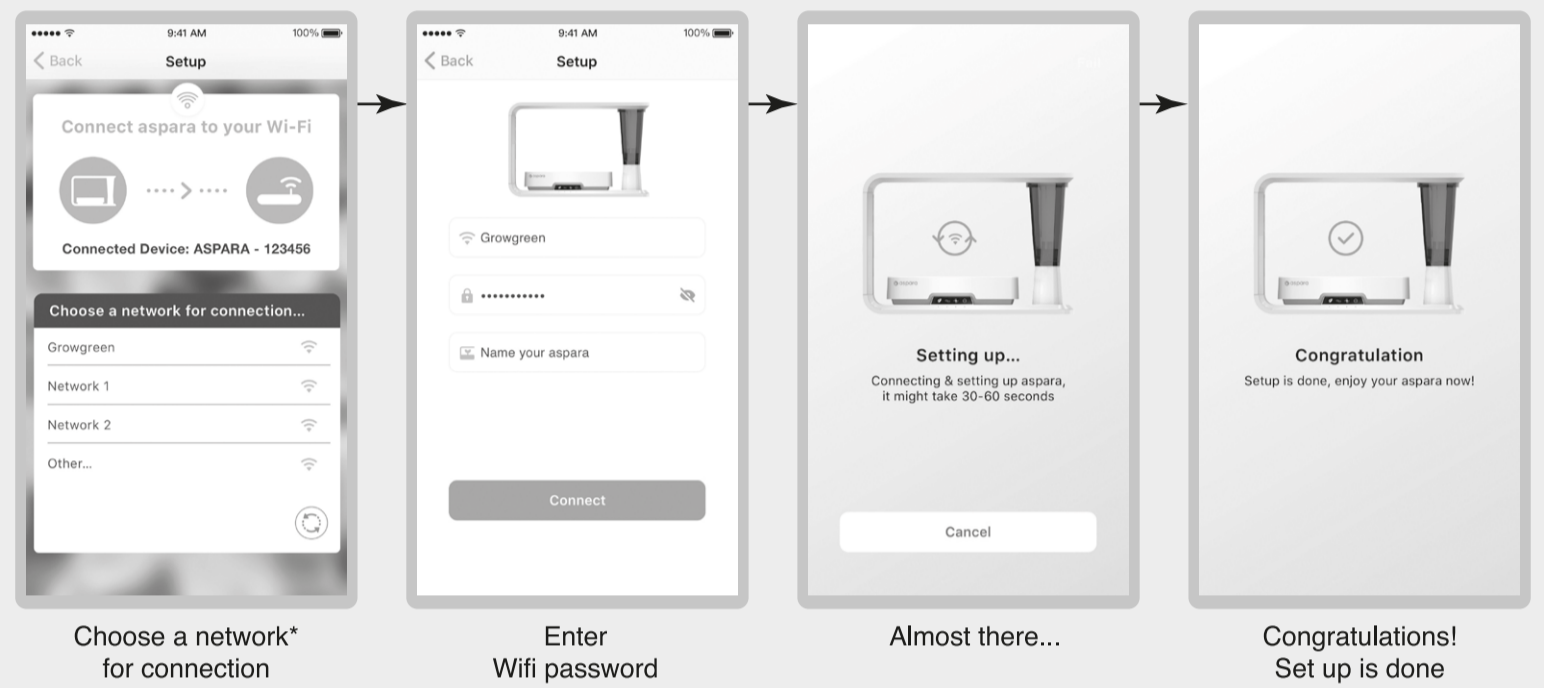
3b/ Enable the pairing mode



3c/ Choose the same device name



3d/ Connect aspara® to internet

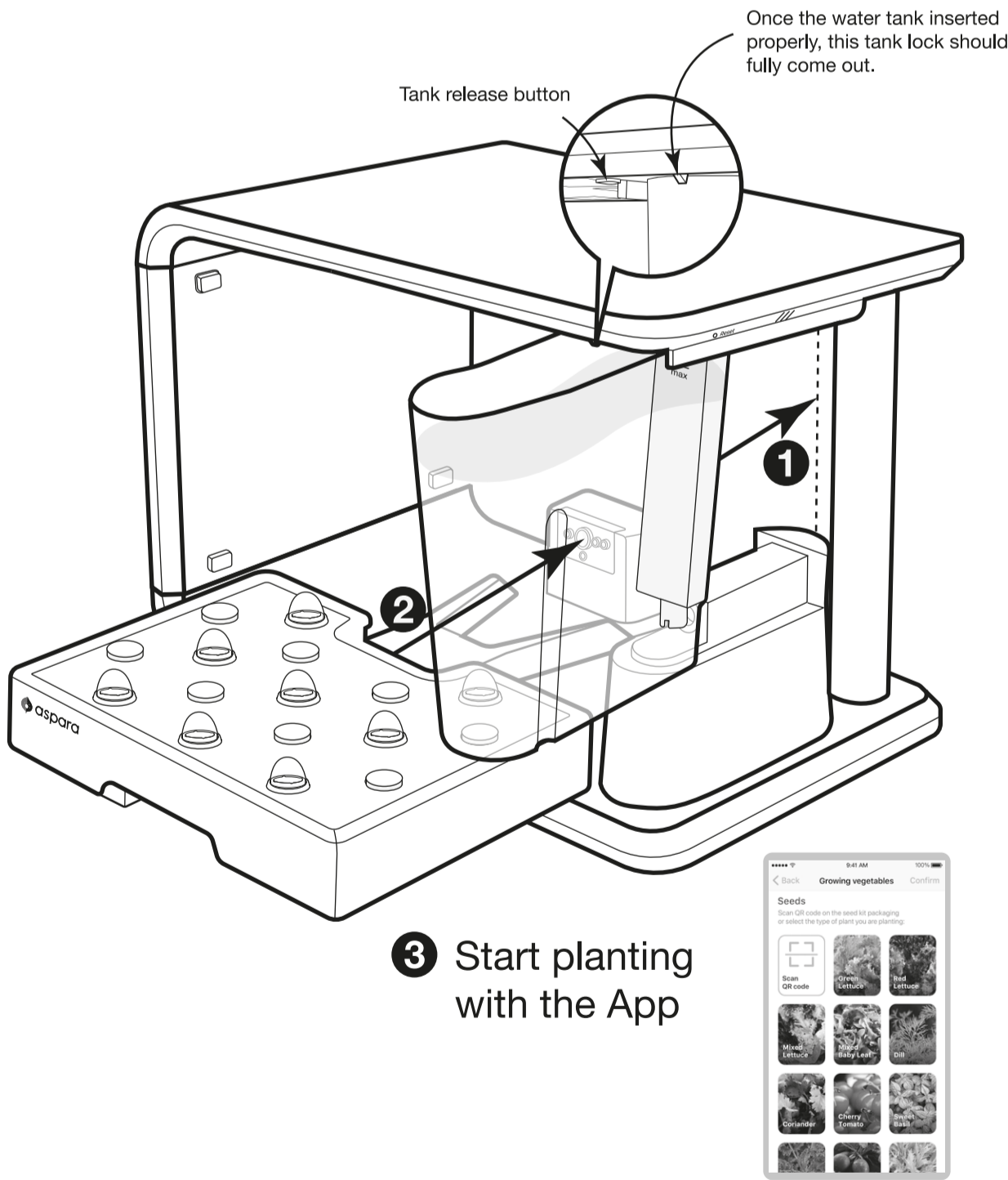


*aspara® Nature+ only compatible with 2.4 GHz WiFi networks.

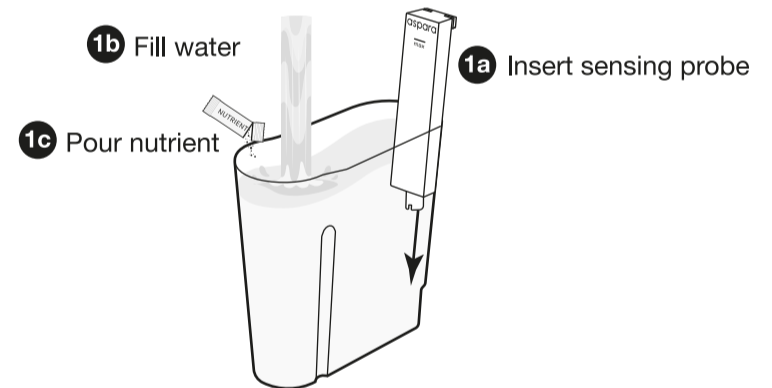
If the device name doesn't show up, check:

1. If Bluetooth is enabled on your mobile.
2. If your aspara® Nature+ is turned on.
3. If you have responded with ✓ when aspara® prompts you to pair with the app.

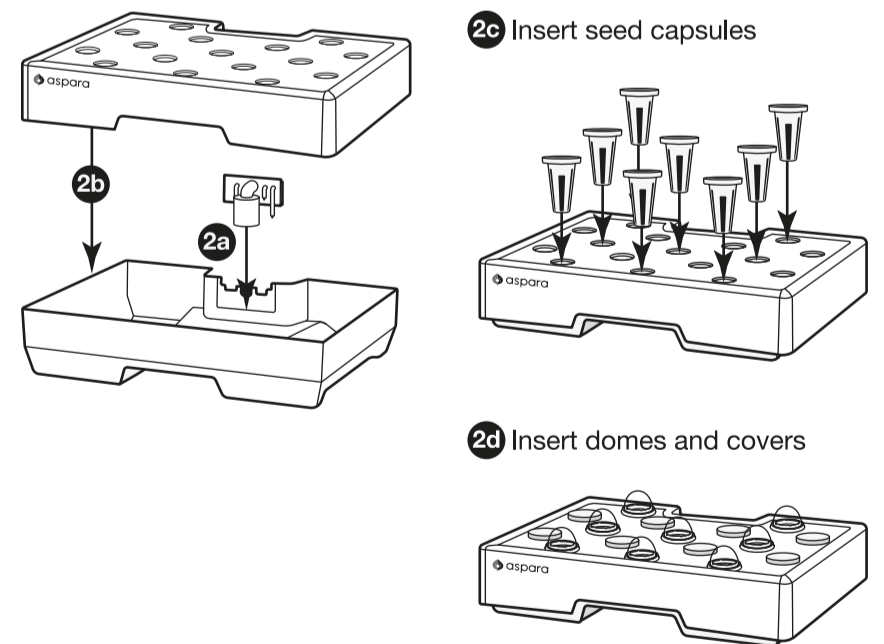
4/ Start Planting



1. Water tank



2. Grow tray



5/ Join aspara® Club

Enjoy membership benefits



6/ Shop Online

For seed kits and accessories

